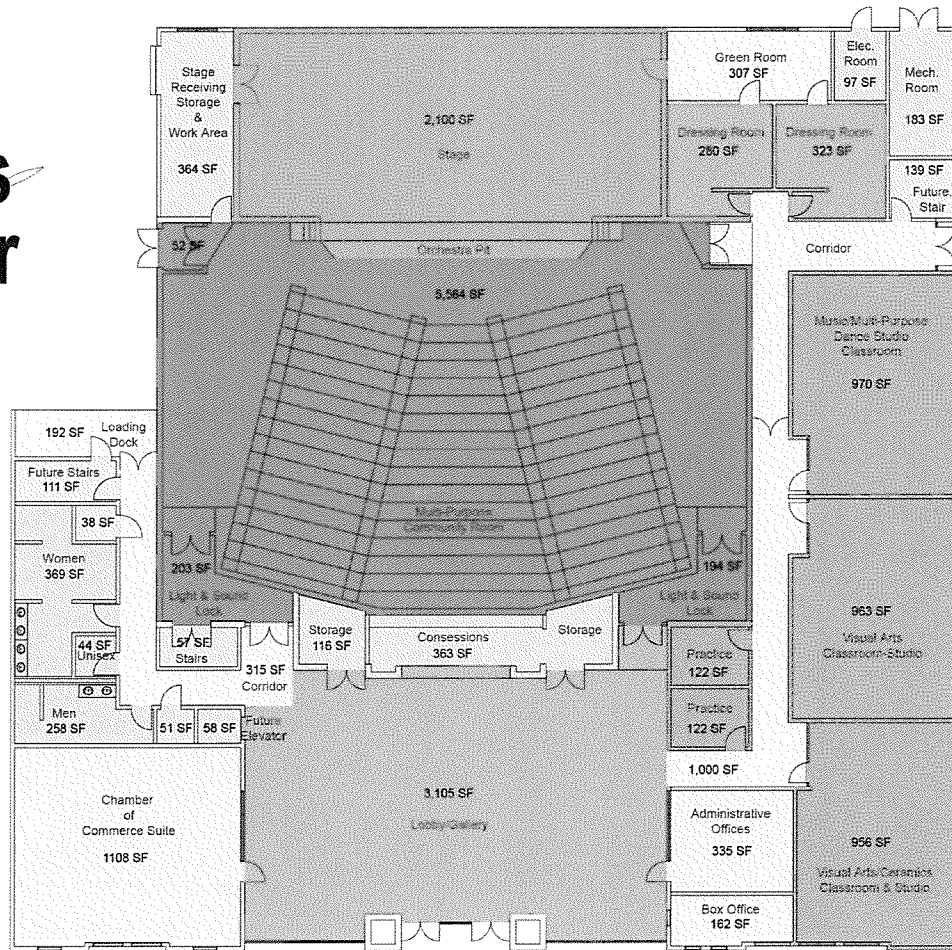


Temple Terrace Community Arts Education Center

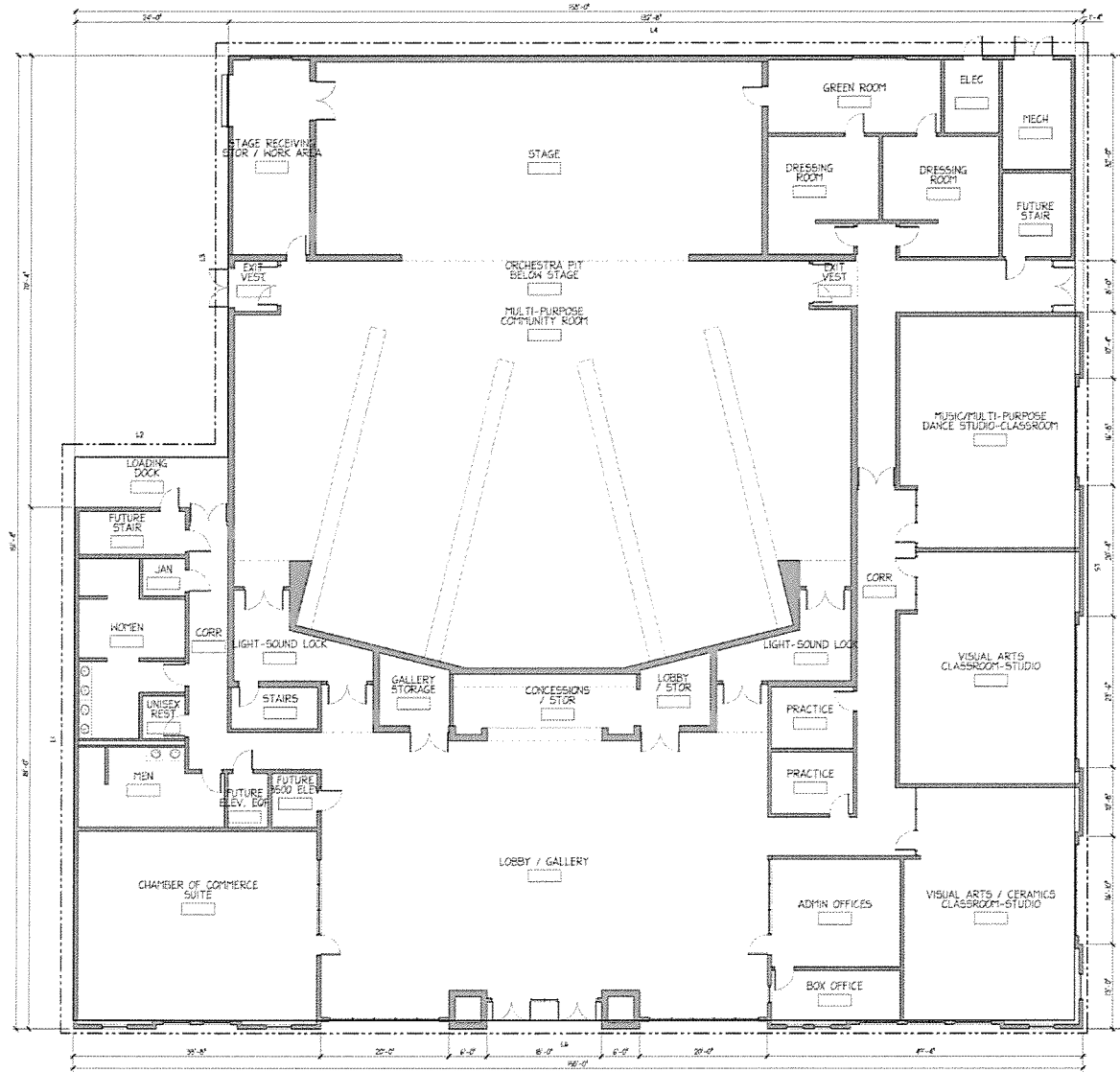
Color legend	Total Area
	Dressing Rooms 603 SF
	Multi-Purpose/Community Room 6,013 SF
	Corridor 1,814 SF
	Studio 3,133 SF
	Office/Admin. 1,605 SF
	Lobby 3,105 SF
	Stage 2,100 SF
	Restrooms 671 SF
	Storage 1,188 SF
	Utilities 389 SF
Total Net Area	20,621 SF



COLLMAN & KARKSY
ARCHITECTS, INC.
ARCHITECTURE, INTERIOR DESIGN, CLIENT SERVICES
AAC003.629

Toppe Consultants, Inc.
Architects Planners

217 Peachtree Street, Suite 1000
Atlanta, Georgia 30308
Tel: 404.525.1200
Fax: 404.525.1201
www.toppe.com



PROPOSED FLOOR PLAN
SCALE: 1/8" = 1'-0"

GENERAL NOTES

KEYNOTES

IN ASSOCIATION WITH
TOPPE CONSULTANTS, INC.

PROGRESS SET

FLOOR PLAN

TEMPLE TERRACE COMMUNITY ARTS EDUCATION CENTER
CITY OF TEMPLE TERRACE

ADDRESS: TEMPLE TERRACE, FLORIDA



ARCHITECTS, INC.

450 ANCHOR PLAZA, SUITE 100 • TAMPA, FL 33654 • VOICE: (813) 884-1000 • FAX: (813) 884-0700
URL: www.collman-karsky.com
AA 0001633

NO.	DATE	REVISION	PROJECT NUMBER
			08024
			DATE
			06-12-08
			A300

ARCHITECT: ROBERT L. COLLUMAN

PROJECT NUMBER: 08024

DATE: 06-12-08

A300







PREFERRED ENTRY



